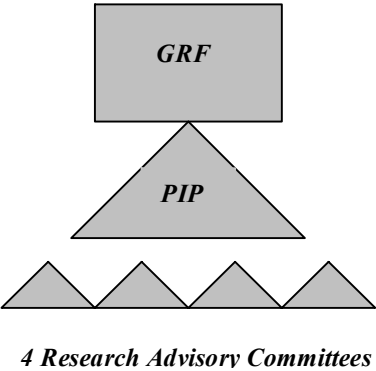


**The RDE Partnership between grain growers, governments, research providers and funders in the Queensland Grain Industry.**



**The Annual Value of the Q'land Grain Production is approx \$600 Million**



**The 4 RACs are responsible for providing advice to research providers & funders on the grain industry's "priority issues". This annual report is published in the format of the Priority Issues Paper (PIP)**

